

ANALEMMA.UK

ELEVATE YOUR WELLNESS

Do you have a question about the Analemma House unit?

Send us an email at info@analemma.uk
and we'll be happy to help!

Want to know more about Analemma Water?
Visit us at our website. www.analemma.uk

Analemma Water is created in The Netherlands

Water and Light B.V.

Manufacturer and exclusive distributor for the Netherlands,
Belgium, Luxembourg, (Benelux), Germany, and India.
Bisschopsweg 2, 3732 HW De Bilt, The Netherlands.

Sole UK Distributor (also serving Internationally)

ANALEMMA.UK

Analemma Water is registered trademark. Scan
QR-code for our website.



ANALEMMA

THE ARCHITECT OF LIFE

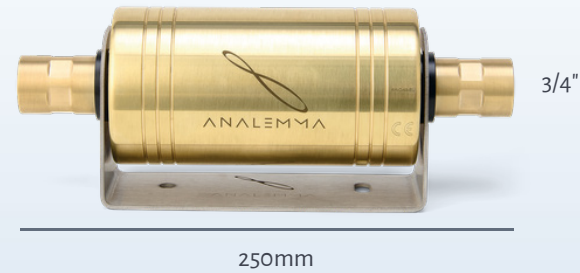


ANALEMMA HOUSE UNIT

INSTALLATION GUIDE

UK / EU VERSION

INSTALLATION INSTRUCTIONS



WARNING: SOLDERING OR WELDING ARE PROHIBITED. When installing the fittings, apply pressure only to the connection itself, not to the rest of the unit.

Installation of the Analemma House unit requires a licensed plumber. The House unit is equipped with standard 28mm piping on the inside. At the end are **connection points with internal BSP screw thread for 3/4" couplings** on both ends.

If the pipe size in your home differs from the size of the Analemma House unit, make sure your plumber purchases a reducer/adaptor.

In that case you will need a coupler that connects your existing pipe to our standard 3/4" connection on the Analemma House unit to properly install it.

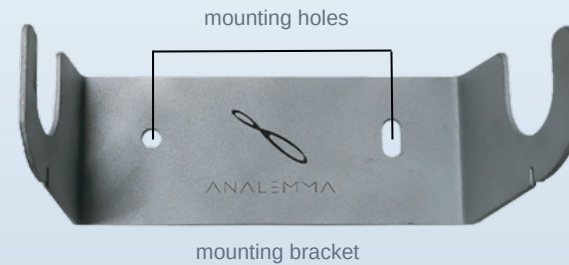
For a good, watertight seal when screwing in the connectors, use a thread sealant such as water sealing tape, Teflon tape, or hemp cord.

NOTE: The Analemma House unit is made of brass, which is susceptible to discolouration. This does not affect the operation of the unit. If you notice that your House unit is discoloured and you don't like the discolouration aesthetically, we recommend polishing the unit with brass polish to remove the tarnish and maintain its natural colour.

The unit may also contain small scratches, which are due to the manufacturing process of the raw materials used in the unit. The scratches do not affect the operation of the unit.

1 Turn off the water main valve or turn off the relevant water system. Make sure the pressure is off by releasing it through a tap in the house.

2 The Analemma House unit comes with a mounting bracket with two prefabricated mounting holes. Determine the best location for the Analemma House unit, preferably near where the water pipes enter the house.



3 Once you have determined the best location for the Analemma House unit, calculate the total length of the pipes that you need to remove in order to place the unit, including the connectors, between the pipes. The total length of the unit is 250 mm. Depending on the pipe system used, add the space required to install the connecting connectors.

4 There are several ways to position the Analemma House unit: horizontally, vertically, and diagonally. Place the mounting bracket level against the wall and mark the two pre-drilled holes on the wall. Leave the unit out of the bracket while you mark the drill holes. Once the unit is in place, you will not be able to reach the drill holes to mark them.

Drill the holes at the markings and insert two 8 mm wall plugs

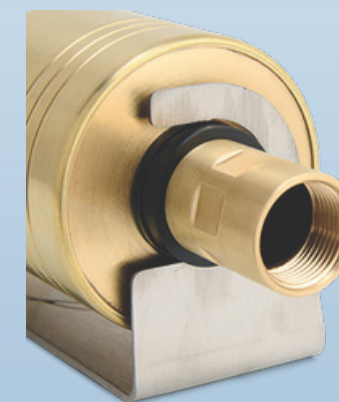
5



6

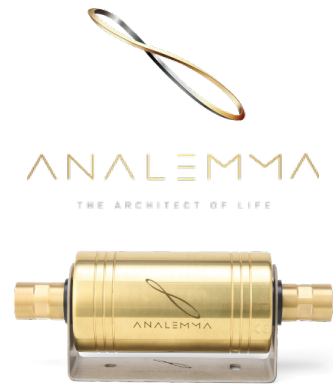
- Place the mounting bracket level on the wall and tighten the two screws with steel washers.
- Connect the Analemma device to the appropriate water supply system. Use two Bahco wrenches to tighten the couplings and the unit securely. For a good, watertight seal when screwing in the connectors, use a thread sealant such as water sealing tape, Teflon tape, or hemp cord.
- Then turn on the water pressure and check that there are no leaks at the connections.

Your Analemma House unit is ready for use.



Use **3/4" inch couplings with internal BSP screw thread** to connect your home unit.





ANALEMMA WHOLE HOUSE UNIT UK / EU

To ensure you can enjoy your Home unit safely and without any problems, we would like to draw your attention to the following:

Have the Home unit installed by a certified plumber.

Make sure that this digital manual with information about the sealing material and tightening (see below) has been read.

EXPLANATION OF SEALING MATERIAL

Loctite 55:

No more than 7 to 12 turns (this may vary depending on the material; the Loctite 55 we use indicates 7 to 9 turns on the packaging)

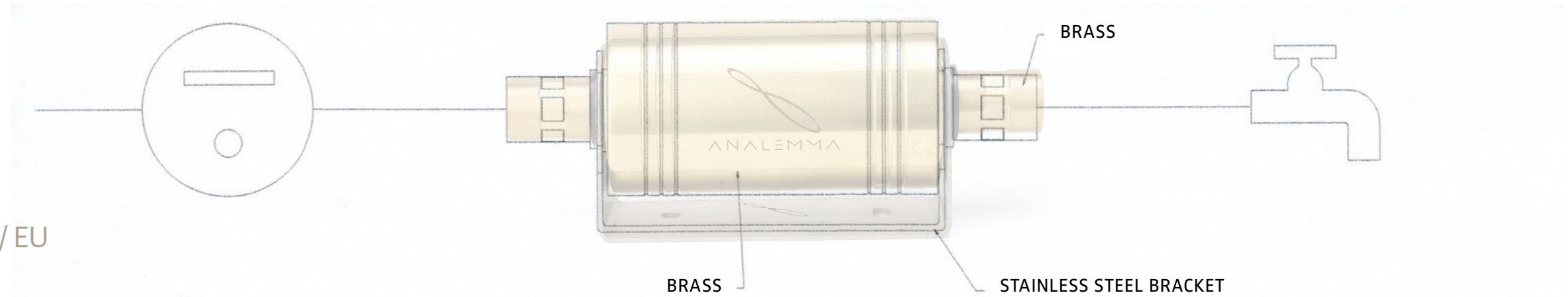
Teflon tape (PTFE tape):

When applying Teflon tape to a threaded connection, **we recommend 3 to 6 turns** (windings). Some sources indicate 5-6 turns as ideal.

HAND-TIGHTENING

Average/Safe ▶ 3 to 5 turns are usually sufficient for a watertight seal.

Maximum ▶ no more than 6-7 turns! Too much tape can prevent the thread from gripping properly, causing the coupling to crack when tightened or the tape to be squeezed out.



3/4" BSP INTERNAL SCREW
THREAD ON BOTH SIDES

